



St. Cloud Heritage Quilters

www.stcloudheritagequiltersofmn.com

Next Meeting:

October 8, 7:00 pm
River's Edge
Convention Center

Guest Speaker: Tammy
Silvers

See page 4 for more
 information

See page 8 for
Guild Calendar



President Julie
 Johnson and Kevin

PRESIDENT'S MESSAGE

Julie Johnson

The time has come! The Quilt Show is just two weeks away. I can't say thank you enough to the show committee for all their tremendous hard work over the past two years putting this together. There is still much to do and if you can volunteer, please do so. It takes many hands to put it all together.

I am excited to see the over 600+ quilts that are registered, visit the booths, and hear our national speaker, Tammy Silvers. It should be a very fun and full weekend.

My hope is that you will participate in the many opportunities that the Quilt Show offers and enjoy the beautiful variety of quilts.

Beyond that we will be seeking out board nominations for the 2023 and 2024 terms. We are in need of the following positions to be filled:

- President-elect (President in 2024)
- Program Chair (2023/2024)
- Secretary (2023/2024)
- Treasurer-elect (Treasurer in 2024)
- Special Events

Many hands make light work and we encourage you to volunteer for one of these positions.

So, quilt on...and enjoy the fine fall weather.

~ Julie

The October meeting of the St. Cloud Heritage Quilters will not be on the usual 1st Thursday.

In conjunction with the quilt show, the meeting will be at 7:00 pm on Saturday, October 8th at River's Edge Convention Center. Tickets for our guest speaker, Tammy Silvers, can be purchased at the door. Parking is free in the convention center ramp.



QUILT SHOW - 2022**Chris Hoover and Renee Sauve****SCHQ Quilt Show “Land of 10,000 Pieces ...” - News**

You had us a little worried right up until the last minute, but you came through for us.

We have 611 quilts registered for the show!

All we can say is thank you and **WOW!!!** We are impressed and so grateful to all of you who registered quilts. YES, we are going to fit them all in and have the best show ever!

Our show is just two weeks away. Hopefully, we have included everything you need to know here.

General Information:

- Admission is \$10.00 each day. If you are volunteering on Saturday or Sunday, you will get a voucher for half off the admission ticket price.
- Hours of the show are: Saturday, October 8, 9:00 a.m. – 5:00 p.m.; Sunday, October 9, 10:00 a.m. – 4:00 p.m.
- The show is in Terry Haws C at the River’s Edge Convention Center in downtown St Cloud. Parking is free both days in any parking ramp and after 5:00 p.m. on Friday. You must pay to park in a surface lot or on the street. You must pay to park on Friday before 5:00 p.m.
- If you are taking a class with Tammy Silvers:
Pointed Comments begins at 9:00 a.m. in the Weidner Room. Set up starts at 8:30 a.m.
Garden Stroll begins at 1:00 p.m. with set up beginning at 12:30 p.m. **There are still openings in this class.** See page 4 for registration information.
- The lecture begins at 7:00 p.m. in the Edelbrock/Clarke room next to the classroom. Doors open at 6:30 p.m. If you purchased your ticket in advance at one of our guild meetings and you have not picked up your ticket yet, you may pick it up at the quilt raffle table or at the entrance to the lecture. If you have not purchased a ticket yet, you may purchase tickets at the show. Admission is \$10.00 for the lecture.

Labeling Your Quilts and Pillowcases:

Each registered quilt must be in its own pillowcase. **The pillowcase must have your name, phone # and the name of your quilt on it.** Hand baste or machine baste muslin labels to pillowcases or pin with safety pins. NO straight pins. **Your quilt also needs to have a label on it that includes your name and phone #.** This label can also be a muslin square that’s basted to your quilt. It doesn’t have to be a permanent label. **Drop Off and Pick Up:**

- **Attached to this newsletter is a map of the convention center that includes everything you want to know about drop off and pick up.** Because we have SO many quilts, come as early as you can to drop off your quilts. The sooner we get them in, the sooner we can start

(Continued on page 3)

QUILT SHOW – 2022 (Continued)**Chris Hoover and Renee Sauve**

(Continued from page 2)

hanging them and the sooner we will be finished. It's going to be a long day and night for us!

- That also means a lot of quilts need to come down on Sunday. Please come early to pick up your quilts as we will all be ready to put our feet up after a great weekend.

Volunteers:

- Please arrive at least 15 - 20 minutes before your shift. If you are a volunteer on Friday, check in will be at the Admissions window in the main lobby outside Terry Haws C. If you are volunteering on Saturday and Sunday, please check in at the Volunteer room. There will be signs directing you to both places. You must check in to receive your half price admission voucher. The voucher is only good for the day you volunteer.
- If you are volunteering on Friday, please do not park in the designated parking slots for drop off. These are temporary time slots for 15-20 minutes only.
- If you have not signed up to volunteer for the show, please consider helping us out with display – both hanging quilts and taking them down! (You do not need to be on a ladder.) We have a lot of quilts to display and many hands make light work.
- We also need volunteers to fill the following positions during the show:
 - ❖ Door monitors: Saturday 9 - noon and 3 - 5; Sunday 10 - 1 and 1 - 4
 - ❖ Quilt Appraisal helpers: Saturday 12:40 - 2:20 and 2:20 - 4; Sunday 10 - noon and 12:40 - 2:20
 - ❖ Show Chair assistants (floaters): Friday 3 - 7; Saturday 3 - 5; Sunday 1 - 4

Appraisals:

- There are still time slots available to have your quilt(s) appraised. The appraisal fee is \$60.

Raffle Tickets:

- ALL raffle tickets - sold and unsold- must be turned in by Saturday, October 8th. We are required by law to track every ticket. Tickets may be turned in at the Raffle Quilt table at the show.

And last but certainly not least:

- We have a wonderful team of SCHQ members on the Quilt Show Committee. They have put in hundreds of hours getting everything ready for our show and they aren't done yet. Please thank them when you see them for all of their hard work in promoting our guild and your beautiful quilts.
- Please spread the word about our show to all your friends and family! Help us make this a huge success for SCHQ!

Lecture/Workshops from our October guest speaker:



Tammy Silvers of Tamarinis will be our guest speaker in October. Her presentation, "Interrogating Your Quilt" will take place at the River's Edge Convention Center on Saturday, October 8th at 7:00 p.m.

Here is Tammy's description of the lecture: *"Don't be nice about it – force that fabric to talk to you! Get the real info on how it can work for you to help you achieve your "quilt" vision. This humor-laden lecture focuses on getting the most from your fabric choices and how fabric can (and does) influence the finished quilt! Supported by plenty of quilt examples from my retinue of quilts – good and bad!"*

Cost of the lecture is \$10.00. When you attend, your payment of \$10.00 will be applied to your 2023 dues making this a free lecture from a national speaker!

If you purchased your ticket for our October speaker, tickets will be available for pick up at the quilt raffle table or at the entrance to the lecture at the show. You must turn in your ticket at the lecture to have the fee applied to your 2023 membership dues.

Workshops:

Our October speaker, Tammy Silvers, will also be teaching two technique-based 3-hour workshops on Saturday, October 8th at River's Edge Convention Center. Tammy has many patterns that you can then sew based on these techniques. We are offering half-day workshops so you will still have time to volunteer, shop the vendors, and see all the quilts. Each workshop is \$20.

The **morning** workshop, **Pointed Comments**, is full.

The **afternoon** workshop, **Garden Stroll**, runs from 1:30-4:30 and there are still openings. Do you love the look of curved piecing, but are not thrilled with actual curved piecing? Good news – Garden Stroll is the perfect project for you! It combines the LOOK of curved piecing with a fused applique technique to make a quick, beautiful table runner!

A supply list is attached with this newsletter. It includes a picture of the runner, fabric recommendations and class prep instructions. The workshop requires a \$12 pattern which you purchase as a download from Tammy's website at <https://www.tamarinis.com/shop/PDF-Patterns.htm>. Patterns are listed alphabetically by pattern name.



Garden Stroll

Quilt Show Vendors

We have a great line-up of vendors for our quilt show. Be sure to check out their booths for your quilting tools, supplies, fabric, or that new sewing machine!

- ❖ Spare Time Designs
- ❖ The Hope & Healing Store
- ❖ Joy In Stitches
- ❖ Paisley Threads
- ❖ Fiskur Leather
- ❖ Rippin' Good Quilt Tools – Note: It was stated at the September Guild meeting that Rippin' Good Quilt Tools would not be able to accept credit cards at the quilt show. That has changed and RG Quilt Tools now accepts major credit cards.
- ❖ Quarry Quilts & Yarn
- ❖ Gruber's Quilt Shop
- ❖ Cindy's Machine Quilting
- ❖ Howells Nest
- ❖ Vacuum Center & Sewing Room
- ❖ Blueberry Backroads
- ❖ Opa with Associates
- ❖ Crafts Direct
- ❖ One Wing Wool
- ❖ Just Sew Studio
- ❖ St. Cloud Sewing Center

NEWSLETTER

Marie Zaczkowski

Anyone is welcome to put an article in the newsletter. The deadline for receipt of articles to appear in the November 2022 newsletter is the **15th** of October. The Guild also accepts ads. Contact me for advertising rates and requirements.



Members of the Longarm Group, from L to R: Alice Sue Becker, Mary Ann Terwey, Carol Mason, Marlyn Anderson, and Kathy Bragelman-Larson, showing that they don't just run quilting machines, but can tie quilts, too!

The group is helping to restore a 50-year-old Ojibwe Star quilt that belongs to a member of Alice Sue Becker's family. It was the first gift the woman ever received from her late husband, so it has much sentimental value.

When Alice Sue took the quilt, it had been "loved to pieces - literally!" The flange binding had been torn away in places and the batting was falling apart. The traditional Star was beautiful, however, and did not take much to repair. The fabric was worn and very fragile, though, so the group volunteered to deconstruct it. When the flange was removed, it was discovered that the top had never been trimmed. After it was hand-washed and air-dried, it took 3 separate trimmings to square the top enough to attach new borders. New batting and a new back were added, and the quilt was ready to tie, as it was deemed too fragile to put on a long-arm frame.

This group of quilters who regularly run the biggest machines in our craft, looked at each other and asked, "Does anyone know how to tie a quilt?" It turns out Kathy did, so with her help (and a little YouTube!) the group got down to work, tying the quilt with red perle cotton.

After it is completely tied, Alice Sue will bind it and return it to its grateful owner, who has been following the quilt's journey in photos.

Kudos and huge thanks to these quilters who went above and beyond to help save a treasured family heirloom.

SMALL GROUPS

Alice Sue Becker

Wool Appliqué - Are any SCHQ members interested in participating in a small special interest group devoted to wool appliqué? If you are interested in joining a small group that would meet periodically to focus on wool appliqué methods and projects, please contact Pam Rickbeil. Include dates of the week and time of the day that would work best for you

(Continued on page 7)

SMALL GROUPS *(Continued from page 6)*

Alice Sue Becker

(Continued from page 6)

Machine Embroiderers - An introductory meeting of the Machine Embroidery group will be on Thursday, October 20, at 5:30 PM at Caribou Coffee inside the Waite Park Cash Wise store. Enter through the Deli Express door on the south side. This meeting will be to discuss date/time/location to hold a monthly meeting. We all have different schedules so if you are not able to attend this meeting, email with your interest in joining the group. We will select a date/time that works for most. If you are able to host a meeting at your home – preferably in the St. Cloud area – please let me know that also. We will want to create a list of the machine brand and model owned by members of the group. If you need assistance in learning how to use your machine, you should contact your local shop for instruction.

Marilyn Bujalski and Jackie Anderson are both experienced machine embroiderers. They have graciously agreed to lead the meetings. Marjorie LaTour will continue to act as contact person and will send out email reminders for the meeting. We look forward to getting the group started.

Featherweight Group - The Featherweight Group is for sewers who own a Featherweight Sewing Machine. The group meets in person on the second Thursday of the month, from 9:30 am to 3:00 pm at Messiah Lutheran Church, 320 4th Ave N., Sartell. Cost is \$3 for use of the facility. Contact Julie Johnson to be added to the email list for meeting notices.

The Undercolor Club - The Undercolor Club is meeting again. We meet at 5:30 in the seating area for Caribou Coffee in CashWise, the last Wed. of the month. Contact Marlyn Anderson for more information.

We have graduated to a new book. It is "The Quilter's Field Guide to Color" by Rachel Hauser. There are 150 color swatches included in the book. You cut them apart and they are used in the different lessons. This author has you making a Bear Paw block for each lesson. As in the past we pick a lesson and make a block for the next meeting, illustrating that lesson in fabric. Using the same background fabric for all the blocks will aid in a cohesive quilt when all the blocks are sewn together.

The Longarm Group - The Longarm Group meets the first Monday of the month at 6:00 at members' homes. If you own a long-arm or mid-arm quilting machine, or are thinking about buying one, you are welcome to join this group. We share ideas, designs, successes and failures(!) and dessert. Please email Alice Sue Becker if you are interested.

The Scrappy Stashbusters - We have one rule! All fabric must come from your stash, except background and backing can be newly purchased! Emphasis is making your stash smaller! We have no meeting time, day, or place. Anyone in the Guild can join and sew when and where you choose! When you have your quilt finished you have made your stash a little smaller and you can keep your quilt or donate to the Guild where Sue or Pat will see that it goes to a well-deserved place. Take a picture of your quilt and write a little something about it and give it to me and we can make a photo album of them. Also, since it is a small group, we can put some in the Guild quilt show this Fall! Happy sewing.

ST. CLOUD HERITAGE QUILT GUILD CALENDAR

Remember to bring your membership card and wear your name tag at the meetings. Bring your show and tell items, birthday fabric/gift if it's your birthday month, money for birthday fabric/gift tickets if you want a chance to win the birthday donations, and finished service projects.

2022

October 8 & 9 -- St. Cloud Heritage Quilters' Quilt Show at River's Edge Convention Center

October 8 – **Note Date Change** Guild Meeting, 7:00 pm (at River's Edge Convention Center); Tammy Silvers of Tamarinis, "*Interrogating Your Quilt*". See page 4 for more information.

October 8 -- Workshops with Tammy Silvers. See page 4 for more information.

November 3 -- Quilts of Honor Presentations

Board meetings are held prior to the Guild meeting. All members are welcome to attend.

SCHQ BOARD MINUTES

Diane Kremer

SCHQ Board Meeting Minutes

September 1, 2022

Present: Pam Rickbeil, President elect, Diane Kremer, (Secretary), Sue Skoblik and Pat Gerchy, Service Projects, Alice Sue Becker (Small Groups) Maggie Voigt (Treasurer) Mary Proell (Special Events), Nancy Piltz Programs, Alice Sue Becker Small Groups, Fawn Wright-Membership, Chris Hoover- Quilt Show Chair

The meeting was Called to Order at 5:40 pm by Pam Rickbeil.

For the Board meetings we will be meeting in Room R14 at 5:30 pm due to Weight Watchers using the main room until 6 pm. Then for our St Cloud Heritage Quilters meeting we will meet in the main room as always in 7:00 pm.

A motion was made for the Approval of August 2022 minutes by Chris Hoover and seconded by Maggie Voigt. All approved.

Treasurer: Diane Kremer made a motion to approve the August 2022 Financial report provided by Maggie Voigt and Chris Hoover seconded the motion. All approved.

(Continued on page 9)

SCHQ Board Meeting Minutes, September 1, 2022 *(continued from page 8)*

Membership report: (Fawn Wright) We have 140 members as of today. Notice for 2023 membership sign-up will be put in the October Newsletter, with Sign-up beginning in November.

Programs/Nancy Piltz report: No Update. We discussed about having a picnic night for August of 2023 with a box lunch. Pam Rickbeil will be checking out a place to have it and the box lunches.

Service Projects by Pat Gerchy & Sue Skoblik: Nothing new. We have 13 or more quilts for the Veterans who serve our country. So far, we have only 2 recipients receiving a Quilt of Honor. If you have someone you know of to honor them with a quilt for their service, please give Julie Johnson a call. We are busy gathering items together for our display at the Quilt show in October.

Small Groups: Alice Sue Becker: Pam Rickbeil is starting a Wool Group with two other women. Please call Pam if interested.

Special Events Mary Proell - No news.

2022 Quilt Show by Chris Hoover: Quilt show will be open on Saturday, October 8th from 9am to 5 pm with tickets sales closing at 4:30 pm. Sunday, October 9 open from 10am to 4 pm and tickets sales closing at 3:30 pm. Look for parking directions on the maps which were sent out with August Newsletter. The small item basket area has enough items. Thank you for your generous donations. There will be a digital billboard display for the Quilt Show which will rotate certain areas. Two each on Highway 94 and 10 and then 4 billboards in St. Cloud. Pay attention, it only views for 8 seconds. You can also find us in the September/October newspaper for "The Country Register". We have sold 5500 tickets as of now and tonight collected about \$590 for more tickets. Awesome Job! We will be selling tickets at Grubers during the Little Falls Craft sale on the weekend of September 10-11. Call Chris if interested in selling tickets. Keep selling! The SCHQ group members have turned in over 500 quilted items to display at the show. Wonderful job! We have 13 appraisals so far. Need Volunteers in all areas, please sign up. No board meeting in October.

New Business: none

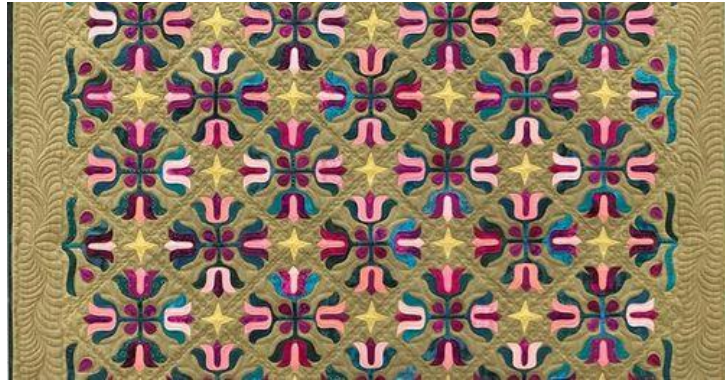
Old Business: Julie is researching information about a new website for our group.

The meeting was adjourned by 6:10 pm. Sue Skoblik made the motion to adjourn the meeting and Maggie seconded it. All approved.

Respectfully Submitted,

Diane Kremer, Secretary

Upcoming Quilt Shows



The Quilters' Sew-ciety of Rochester will host their biennial quilt show "Timeless Traditions" on

Friday, October 21, 2022 9AM - 7PM

Saturday, October 22, 2022 9AM - 3PM

Admission \$5

Location:

[Holy Spirit Catholic Church](#)

5455 50th Ave NW

Rochester, MN 55901

You are invited to attend and view a variety of beautiful hand-made quilts and wall hangings on display. The show will have a vendor mall, a boutique where visitors have an opportunity to purchase finished hand-made quilted items, a silent quilt auction of small quilts, special recognition displays, and demonstrations of quilting techniques.