



MARCH 2015

St. Cloud Heritage Quilters

www.stcloudheritagequilters.com

Next Meeting: March 5, 2015

Love of Christ Lutheran Church
1971 Pine Cone Road S.
St. Cloud, MN 56303

[Click here](#) for directions

7:00 P.M



Karen Cyson, President
karencyson@aol.com

Note new meeting location;
See directions on page 2

See the Quilt Guild
calendar on page 7.

PRESIDENT'S COLUMN

Karen Cyson

I don't know about you, but I am more than ready for spring. The Equinox is early this year – only 15 days after our March meeting. I never quite got my leaves raked last fall. My rake is frozen in place on my patio so it's ready to be used again as soon as we have a thaw.

"Put a ring on it." No, not the song, but your *All About Me* Project for February -- the lip balm caddy. In the midst of set up for the February meeting, the pile of templates and instructions got moved to another table but the bag of rings was left behind. Please see me for your ring to complete your projects. I have a whole bag of 'em. And if you need the template or instructions, or even the hardware for January's luggage strap/key fob, I have all of those items. March will be the last opportunity to pick up the January project hardware.

"Put a note on it." Your calendar, that is. Mark the dates for our 2015 quilts show (**October 10-11**) AND why not also add an index/recipe card or large note paper where you can list your projects for the show? Move it forward each month and keep track of your progress. You don't want to be the quilter frantically binding quilts the first week of October or, worse yet, lamenting not finishing the projects you wanted in the show. We have a great show committee, a fun theme, and lots of time to get all of the work done, but only you can make your quilts for the show. We want to see your quilts. We really do! Don't be shy about entering them. This is your quilt show.

Our program chairs have done an excellent job of filling out the calendar for 2015 and they're already scheduling speakers for 2016. Every guild meeting provides you with an opportunity to learn and grow in your quilting expertise. Your membership, for less than \$3 per month, brings experts to our meetings. Don't forget to renew for 2015.

It's not too late to sign up for the 2015 mystery quilt. We already have more people doing this year's quilt than we did last year. It's a 10-month project, so even

PRESIDENT'S COLUMN, Continued

if you start now and work on one clue for each month, you'll be done at the end of the year.

I'm having a lot of fun working on the brown bag row-by-row exchange project. Each month's bag is a surprise and a challenge. If you have ideas for other activities like this, please let us know.

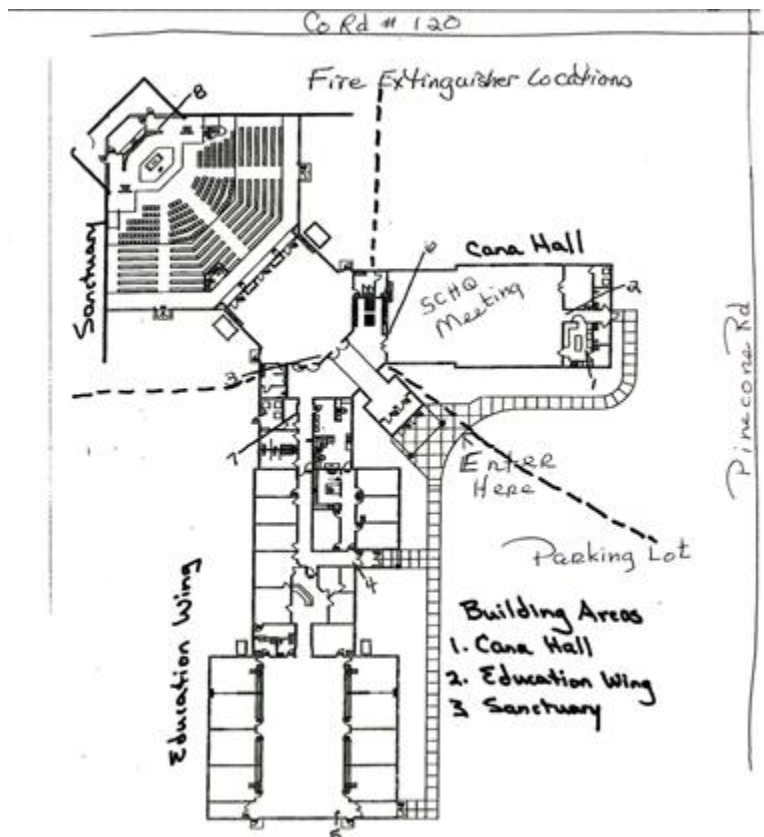
If there is anyone in our membership who would like to work with me on developing a set of cohesive by-laws, please contact me. Right now we have a folder of papers with rules and policies, but I think a single document summarizing all of this would be more manageable. Marjie did a great job last year reworking all of the position descriptions with the board and if we could add a working set of by-laws to our documents then each succeeding board would have a much easier transition.

Contact Karen Cyson karencyson@aol.com

DIRECTIONS TO LOVE OF CHRIST

Marjorie LaTour

Beginning with our January 8, 2015 meeting, our location has changed to Love of Christ Lutheran Church located at 1971 Pine Cone Road, St. Cloud, MN. It's the church with the big blue roof! The entrance to the parking lot is located off Pine Cone Road. Enter through the main door; our meeting space will be to the right. See the schematic below.



SCHQ BOARD MINUTES**Ann Chmielewski**

The February 5, 2015, SCHQ Board meeting was called to order by President Karen Cyson at 5:50 p.m. at Love of Christ Lutheran Church.

Present: Audrey Abraham, Marlyn Anderson, Ann Chmielewski, Karen Cyson, Cindy Kleve, Tonya Robinson, Brooke Strassburg, Sandra Williams, Fawn Wright

BOARD REPORTS:

Secretary (Ann Chmielewski): A motion was made by Sandra and seconded by Cindy to approve the January 2015 minutes as printed in the newsletter. Motion passed.

Service Projects (Cindy Kleve): The St. Augusta Legion donated \$100 to SCHQ for service projects that will benefit veterans. The funds will be used to purchase supplies for the Quilts of Valor project. Board members were wondering if other organizations would be interested in donating funds for our service projects. Cindy will mention this at the meeting and encourage members who have connections with charitable organizations to ask if they have an interest in donating funds for one or more of our projects. A couple of new service projects will be shared with members at the meeting. One project is making pillowcases for a unit of 12 servicemen/women who are being deployed to Kuwait in the near future (Tom and Diann Kremer's son is a member of this unit). Cindy found out that there are approximately 1,000 Minnesota servicemen/women who are currently deployed, so any number of pillowcases will be welcomed for this project. The Love of Christ Lutheran Church is allowing us to use their facilities free of charge because the Guild does service projects for charitable groups. Cindy asked church staff if they had a special organization that Guild members could support. They would appreciate donations of twin-sized quilts to Anna Marie's Alliance.

Newsletter (Sandra Williams & Deb Danneman): The deadline for submission of articles for this month's newsletter is February 12.

Programs (Marlyn Anderson and Teri Olson): Marlyn and Teri are working on the schedule of speakers and programs for 2015 as well as the first three months of 2016. Next month's speaker will be Kari Schell, On Point Quilter, who will talk about rulers and piecing accuracy. Members with ideas and/or recommendations for speakers or programs are welcome to send their suggestions to Marlyn and/or Teri.

Membership (Fawn Wright): As of the end of January, there were 96 paid members for 2015. Approximately 40 members from last year have not renewed their memberships yet. Fawn is hoping those members will pay their dues at this month's meeting. She will draft an email message to those members who have not renewed and encourage them to continue being members of SCHQ. Sandra offered to send the messages. Members who have not paid their dues will be removed from the newsletter distribution list. Recruitment ideas and possible incentives for new members were discussed. Fawn thought it would be interesting to follow up on Cathy's effort last year to add the year that members joined the Guild to the membership roster. Members will be asked to add that information to the roster when they sign in next month.

Small Groups (Audrey Abraham): Clue two of the Mystery Quilt will be available for pick up at the meeting. Participants in the Row-by-Row group will continue to exchange bags (month 5 of 8). Audrey will ask members to make one or more 9 1/2" and/or 12 1/2" blocks (unfinished size) from their scraps. The blocks will be collected and sewn into quilts for this year's service projects. A few sample blocks will be shown at the meeting. Patterns for those blocks will be available at the meeting and will be sent out with the newsletter.

SCHQ Board Minutes, Cont.

Ann Chmielewski

Treasurer (Brooke Strassburg): The December 2014 Treasurer’s report was reviewed and approved with one date change. The approval of the 2015 Proposed Budget was postponed until the March meeting. Sandra will check with Deb to see how much was actually spent on postage in 2014.

A motion to adjourn was made by Marlyn and seconded by Brooke. Motion passed. The meeting adjourned at 6:25 p.m.

Notes by **Ann Chmielewski** annchmielewski@gmail.com

MEMBERSHIP

Fawn Wright

I am so excited about the membership for this 2015 year. I hoped to see 100% renewal and I can say we might just make it -- there are only 18 more renewing members left from the last year’s list. Yippee! Plus we have been getting wonderful new members, which is the best news of all. To date (Feb.11th) we have 118 paid members for this quilt show year.

If you are one of the few who still needs to renew (or you would like to join) just fill out the form that is included in this newsletter and mail it with your check to the PO Box or bring it to the March meeting. We will add you back in to the appropriate list so that you will continue to get the newsletter next month.

Welcome to our newest members! They are **Kathryn Stolpman, Ginger Delles, Shirley Lieser, Jena Eggersgluess, and Sue Skoblik.**

Stay warm and quilt!

Contact Fawn Wright fawnmwright@gmail.com

KUDOS TO . . .

Thank you to the holders and folders at the February meeting. . .

Audrey Abraham, Teri Olson, Marlyn Anderson, and Rosie Reither

Please remember to sign the sheet at the membership table

so your name can be included here.

Your help is appreciated!

SERVICE PROJECTS**Cindy Kleve**

Thank You to all who have participated in Quilts of Valor! We will have more kits at the March meeting. Just a reminder of the size: quilt tops are 55" – 72" wide by 65" – 90" in length.

We are also making twin size quilts for Anna Marie's House; any colors and any design will be great!

Our last project we are working on is pillowcases. We need some for troops in Kuwait and Ipc group. Please bring pillowcases in any colors. Our goal for this year is 100.

Contact Cindy Kleve cindysmq@mail.com

NEWSLETTER**Sandra Williams & Deb Danneman**

Anyone is welcome to put an article in the newsletter. The deadline for receipt of articles to appear in the April newsletter is **March 12th**. Articles should be sent to me at sandraqwilliams@gmail.com. Thanks!

PROGRAMS**Marlyn Anderson and Teri Olson**

Prepare to be educated on **Thursday, March 5th**, as **Kari Schell**, owner of On Point Quilter, describes her design process, shows beautiful quilts and demonstrates useful tools. During this lecture, you will see several quilts from her current designs and maybe even a sneak peek at a new project. Many of her projects utilize over-sized piecing and subsequent trim-downs with rulers from Deb Tucker's Studio 180 Design. She will share tips for effectively using these rulers for perfect piecing.

Contact Marlyn Anderson pyromarquilter@gmail.com or Teri Olson teriolson35@yahoo.com

SUNSHINE**Jeanne Skaj**

No cards were sent since our last meeting. If you know of a Guild member who has had an illness, surgery or loss of a family member, send an e-mail message with the member's name and address to me at jmskaj@gmail.com. I will confirm receipt of your e-mail. If you don't receive a confirmation, please call me (number on mailing page attached for members).

Contact Jeanne Skaj jmskaj@gmail.com

SMALL GROUPS**Audrey Abraham**

For small groups we have EQ7, and now Row by Row, color group and a mystery quilt.

For February I have scrap quilt blocks that we can put together for our Army people. Please make a **9 ½” block**. You can put anything that you want into this block; it doesn't have to be red, white and blue. Flowers would be good too. I'm asking you ladies to make one or two blocks to help out. When we have so many, maybe we could get together and sew them up. Thanks! [See the attachment to this newsletter for the pattern.]

I have a **12 ½” block project** that will go for the rest of 2015. This block is fun and easy; you can use scraps if you want, and both light and dark colors. When I get a lot of these blocks, we can do the same as the 9 ½” block – get together and sew them together. I want to make this to be fun; when you turn your block in you can be in a drawing each month. Turn them into me so I can put your name in the drawing. [This pattern is in an attachment.]

EQ7 meets at the St Cloud Public Library in the Array room. The EQ7 group is open to anyone interested. Our next meeting is **Tuesday, February 24th, from 5:30 - 8:45**. Maggie Voigt is the facilitator rmntv@hotmail.com

Contact Audrey Abraham quiettimequilting38@yahoo.com

QUILT SHOW RAFFLE QUILT**Chris Hoover**

I am truly honored to have been chosen as the featured quilter for the 2015 quilt show in October. Whenever I speak to a group, I always tell them that SCHQ is the main reason I am pursuing my passion as a quilt pattern designer. I am continually inspired by all of the creativity that abounds within our group and so greatly appreciate all of your encouragement, support and friendship. My heartfelt thanks to the quilt show committee and to all the members of SCHQ. I am so proud to be a part of this wonderful group.

Contact Chris Hoover whirligigdesign@charter.net

Note from the Newsletter Co- Editor**Sandra Williams**

After some discussion by the board, it was decided that no phone numbers will be printed in the newsletter. The newsletters are placed on the Quilt Guild website, and thus are available to the public. Board members do not mind having their email addresses made public, but they would like to keep their phone numbers available to members only.

In order to make sure that members have easy access to all the board members' contact information, you will find an attachment of the "mailing page" when you receive your emailed newsletter. This page is printed by Deb Danneman, Newsletter Co-Editor, to use for mailing each month's issue to those who pay extra for this service. But it also includes a list of the board members with all their contact information, including phone numbers.

You will also find attached this month a Membership Directory (please check your listing for accuracy and let Fawn Wright know if there is something that needs to be changed), a membership form (feel free to pass this on to a potential new member or a returning member), 2 patterns for the small group projects, and the December Treasurer's Report.

Contact Sandra Williams sandraqwilliams@gmail.com

St. Cloud Heritage Quilt Guild Calendar

Remember to wear your cloth name tag at the meetings and to bring your show and tell items, birthday fabric, \$ for birthday fabric, and any library books that need to be returned.

Feb. 24 -- EQ7 Meeting; 5:30-8:45; Array Room, St. Cloud Public Library

March 5 -- Board Meeting, 5:45; Guild Meeting, 7:00; **Kari Schell**, owner of On Point Quilter, will present a trunk show and discuss use of rulers for perfect piecing

April 2 -- Board Meeting, 5:45; Guild Meeting, 7:00

April 28 -- EQ7 Meeting; 6:15-8:45; Array Room, St. Cloud Public Library

May 7 -- Board Meeting, 5:45; Guild Meeting, 7:00

June 4 -- Board Meeting, 5:45; Guild Meeting, 7:00

July 9 -- Board Meeting, 5:45; Guild Meeting, 7:00

Aug. 6 -- Board Meeting, 5:45; Guild Meeting, 7:00

Sept. 3 -- Board Meeting, 5:45; Guild Meeting, 7:00

Oct. 1 -- Board Meeting, 5:45; Guild Meeting, 7:00

Oct. 10-11 -- 25th Quilt Show; Haehn Campus Center, College of St. Benedict

Nov. 5 -- Board Meeting, 5:45; Guild Meeting, 7:00

Dec. 3 -- Board Meeting, 5:45; Guild Meeting, 7:00